

A man in a dark suit and glasses is seated on a black piano bench, playing a grand piano. He is looking down at sheet music on the piano. The room is dimly lit, featuring a large white modular shelving unit on the left with a wooden ladder leaning against it. In the background, a woman in a red dress stands near a doorway. The floor is light-colored wood, and several sheets of paper are scattered on it. The overall atmosphere is sophisticated and artistic.

ADVENTURE IN ARCHITECTURE ◯

DEVELOPMENT PORTFOLIO





## DEVELOPMENT PROJECTS



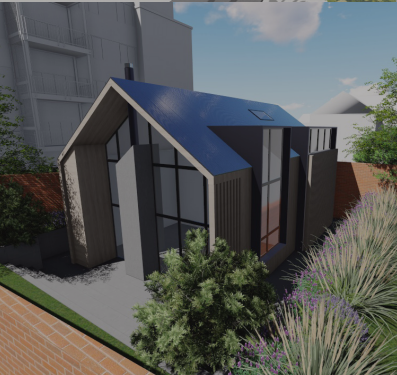
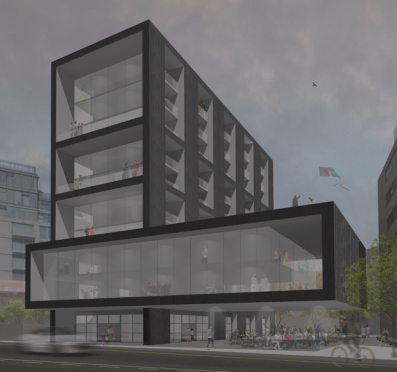


# DEVELOPMENT PROJECTS

From one off houses to mixed use towers, our development team will explore, design and deliver your scheme to maximise your investment.























Portland House

NORWICH





SUGA SPACE

















COVENT GARDEN STATION



UNDERGROUND

Don't get ripped off by the currency exchange.

at [www.currencyexchange.com](http://www.currencyexchange.com)





















































ADVENTURE IN ARCHITECTURE ◯  
**OUR OFFICES**



**SOUTH POLE OFFICE**

Latitude: 90° 00' 00" S  
Longitude: 0° 00' 00" E



**REGAL HOUSE**

7th floor, REGUS  
70 London Road  
Twickenham

TW13QS





**JONATHAN BESWICK**

“Just as you can’t design without drawing on your own experience, you cannot experience architecture without stimulating memory. Visual clues (over our other senses) are the most powerful memory flares, the strength of which vary according to how new the architectural experience is”

## **CONTACT ME**

Jonathan Beswick | Adventurer . Architect . Director

BArch (hons). PG Dip Arch. ARB.

+44 (0) 07791938763 / +44 (0) 203 883 9594

[jon@adventureinarchitecture.co.uk](mailto:jon@adventureinarchitecture.co.uk)



[ADVENTUREINARCHITECTURE.CO.UK](http://ADVENTUREINARCHITECTURE.CO.UK)